



DIAMOND TROPICAL HARDWOODS
Exotic Hardwoods from Latin America

***Hand-picked
Wood***

Highly Figured



2024

Environmental Conscience



The story of Diamond Tropical Hardwoods grew out of a desire to help and to serve others. Kevin and Christine Yardley met while both were studying at Harvard University. Upon graduating, the newlyweds volunteered to teach English for the WorldTeach Organization in rural Costa Rica. Because there was no guarantee of them being stationed in the same area, Christine became a teacher in the program while Kevin began dedicating his prodigious energy to protecting the environment in an entrepreneurial way. Costa Rica had some of the fastest deforestation rates in the world, so there was a desperate need to offset this environmental destruction. Costa Rica's bio-diversity includes 5 percent of all known species in an area the size of West Virginia. The reforestation effort in Costa Rica has done a great deal of good.

In 1992, Diamond Tropical Hardwoods bought their first degraded cattle farm and began planting teak. In addition to farming teak, they have planted seventy other species including endangered native trees such as cocobolo rosewood, Spanish cedar and mahogany.

Today, their plantations protect more than 1000 acres of primary and secondary jungle. The company has seen the impact of logging in the rainforest and the widespread harm that it produces. This is why Diamond Tropical Hardwoods adheres to internationally recognized Forest Stewardship Council environmental principles and has chain-of-custody (CoC).

Our business is a member of the Forest Stewardship Council (FSC).

**PROTECT OUR ENVIRONMENT!
USE ONLY RESPONSIBLY REFORESTED, SUSTAINABLE HARDWOODS!**



The mark of
responsible forestry



Teak (*Tectona Grandis*) is one of the finest woods in the world. The best outdoor furniture and boats are made with teak. Teak has natural oil and silica that make the wood very durable. We stock a lot of S4S and sanded teak including tongue and groove for siding, ceilings, and working on boats. Lots of slabs, crosscuts, and bases for stools, coffee and dining tables.



Cocobolo Rosewood (*Dalbergia Retusa*) is the most popular true rosewood. The wood has brilliant colors with oranges, reds, and blacks all swirled together. We stock a lot of squares for pool cues, pen making and turnings as well as lumber and veneer. We have a proprietary, hand-picked, super figured line of cocobolo we call KING.



Goncalo Alves/Tigerwood Ebony (*Astrononium Graveolens*) is a hard, dense wood with striking black lines that can look like ebony. Goncalo with some white wood/sapwood highlights the brilliant oranges, reds, and yellows with black stripe.



Monkeypod (*Pithecolobium Samans*) is similar to figured black walnut. We stock a lot of giant slabs and crosscuts used for dining and coffee tables and bars.



Spanish Cedar (*Cedrella Odorata*) is a durable wood with great properties. Popular for humidors and instrument making, we stock a lot of quartersawn guitar necks and bodies and 1/4" thick sanded veneer.



Mahogany (*Swietenia Macrophylla*) is straight grained and stable and sought after by musical instrument makers around the world. We stock a lot of quartersawn guitar necks and bodies.



Granadillo (*Platymiscium*) is very similar to rosewood with a range of colors from dark red to pink and can have lots of character with dark stripes. Popular in fine furniture, flooring, and musical instrument making, granadillo is used in fine turnings and cabinetry.



Mango (*Mangifera Indica*) is the highest figured wood we have come across in 30 years in the exotic wood industry. Very similar to koa, mango has curly grain, spalting, yellows, pinks, oranges, tans and green colors with lots of fiddleback, burls, whirls, and swirls.



Yellowheart (*Maclura Tinctoria*) is a hard, dense wood with brilliant color that is long lasting. Used in cutting boards, turnings, pool cues, and marquetry, yellowheart has nice ribbon figure and better tap tone than mahogany.

We have a fine woodworking business so we can edge, plane, sand, roundover, and change the shape of wood. This can save time and money on shipping as rough wood is heavier and more bulky than finished wood.

S4S = surfaced four sides

E2E = eased two edges

Quartersawn = vertical grain that makes the wood more stable and is required for the best teak decking, guitar necks, and other uses.

We own FSC certified reforestation projects, sawmills, and kilns as well as a fine furniture factory. We make many lines of furniture and wooden products for the best companies such as Martin Guitar, Knoll, Henry Hall Designs, etc.

Please call or email howdy@diamondteak.com to check out how we can lower your costs by edging, planing, sanding, shaping, etc.

Finished wood costs less to ship! We appreciate your business.

SPECIES	HEARTWOOD 100%	STANDARD TEAK	DESCRIPTION
TEAK LUMBER	\$0.22 each		5/8" x 5/8" x 5" pen blanks
	\$0.31 each		3/4" x 3/4" x 5" pen blanks
	\$0.56 each		1" x 1" x 6" pen blanks (7" and 8" available) also comes in end grain at \$0.98 each
	\$42.84		100 Pieces of 3/4" x 3/4" x 5" Highly figured pen blanks
(PRICE PER BOARD FOOT UNLESS INDICATED OTHERWISE)	\$8.51	\$6.06	Shorts, 4/4, 2" to 4" wide; under 24" long
	\$10.96	\$7.28	Shorts, 4/4, 4" or wider; under 24" long
	\$14.56	\$8.51	4/4; 2'-3' L x 3" -6" W
	\$18.25	\$9.73	4/4; 3'-5' L -4" and wider
	\$21.92	\$10.96	4/4; 5'-8' L x 3" -6" W
	\$17.02	\$9.98	4/4; 2' -3' L x 4" -10" W
	\$25.59	\$14.58	4/4; 3' -5' L 4" -10' W
	\$30.49	\$17.02	4/4; 5' -8' L x 4" -10" W
	\$32.93	\$19.47	6/4-8/4; 4' -8' L x 4" and wider
	\$6.12 to \$11.68		4/4-8/4; highly figured shorts
	\$36.60	\$20.69	8/4; 8' -13' L x 3" -6" W usually special order
	\$12.12- \$16.02		Bookmatched boards from same log and large slabs
	\$7.78 - \$24.44		per board foot Beams and posts; 4" x 4", 4" x 8", etc.
\$20.8 - \$30.68		per square foot Quartersawn teak decking (depends on dimensions)	
		* Standard teak has a mix of heartwood and sapwood	
		* We stock planed teak that has one face clear = one wide face with all heartwood	
TEAK VENEER	\$4.77		Price per sq foot; sanded veneer (finished at 1/16th")
	\$6.08 to \$8.44		Price per sq foot; sanded veneer (finished at 1/8th") 3/32" and 1/4" thick sanded veneer also available

	Heartwood 100%	One face clear	Standard Teak	Tongue & Groove (universal) One package covers 40 Sq Ft
TEAK SIDING/FLOORING (7/16" thick)	\$425.00	\$319.00	\$255.00	96" long x 3" wide x 1/2" thick (pack of 21 boards)
	\$379.00	\$271.00	\$302.00	90" long x 3" wide x 1/2" thick (pack of 23 boards)
	\$331.00	\$281.00	\$199.00	84" long x 3" wide x 1/2" thick (pack of 24 boards)
	\$319.00	\$242.00	\$186.00	72" long x 3" wide x 1/2" thick (pack of 28 boards)
	\$305.00	\$204.00	\$173.00	60" long x 3" wide x 1/2" thick (pack of 34 boards)
2.75" FACE WHEN INSTALLED	\$239.00	\$191.00	\$160.00	48" long x 3" wide x 1/2" thick (pack of 42 boards)
	\$211.00	\$165.00	\$147.00	36" long x 3" wide x 1/2" thick (pack of 57 boards)
	\$156.00		\$113.00	30" long x 3" wide x 1/2" thick (pack of 69 boards)
	\$132.00		\$100.00	24" long x 3" wide x 1/2" thick (pack of 88 boards)
	\$126.00		\$95.00	22" long x 3" wide x 1/2" thick (pack of 96 boards)
PRICE PER PACK	\$118.00		\$88.00	18" long x 3" wide x 1/2" thick (pack of 118 boards)
	\$106.00		\$81.00	14" long x 3" wide x 1/2" thick (pack of 148 boards)

SPECIES	HEARTWOOD 100%	STANDARD TEAK	DESCRIPTION
---------	-------------------	---------------	-------------

**TEAK SIDING /
FLOORING (3/4")**

WE CAN MAKE TEAK TONGUE AND GROOVE UP TO 6 INCHES WIDE.
PLEASE SEND THE SPECIFICATIONS = WIDTH, LENGTHS, AND THICKNESS.

Marine Grade=All heartwood teak is available for all teak lumber, siding and flooring. Please inquire.

	LENGTH	WIDTH	THICKNESS	BD FT	PRICE
	48	1.75	0.875	0.51	\$21
	48	2.25	0.4375	0.33	\$14
	48	2	0.5	0.33	\$14
	48	3	0.5	0.50	\$22
	48	4	0.75	1.00	\$45
	48	2.75	0.75	0.69	\$23
	48	2.5	0.75	0.63	\$21
	48	6	0.125	0.25	\$21
	60	2.5	0.5	0.52	\$21
	60	3	0.375	0.47	\$34
	60	1.875	0.375	0.29	\$17
	60	5.75	0.375	0.90	\$63
	60	1.1875	1.1875	0.59	\$21
	72	1.75	0.5	0.44	\$19
	72	1.875	0.5	0.47	\$17
	72	2.5	0.5	0.63	\$21
	72	3	0.5	0.75	\$27
	72	3.5	0.5	0.88	\$29
	84	3.5	0.5	1.02	\$29
	96	1.75	0.5	0.58	\$37
	96	3	0.5	1.00	\$42
	96	3.5	0.5	1.17	\$45

**TEAK ALL
HEARTWOOD,
EDGED, PLANED
AND SANDED**

	HEIGHT	NUMBER	SMALL END D.	BIG END D.	PRICE
	28	T2342	13	14	\$243
	17	T2796	10	10	\$332
	16	T0186	17	20	\$184

TEAK BASES



**Teak Base #T2519
Height 18 Inches**



**Teak Base #T0186
Height 16 Inches**



**Teak Base T2796
Height 17 Inches**

SPECIES	Regular	Some white	King	DESCRIPTION	Pack of 100			Pack of 500		Pack of 1000		
					Some white	reg.	king	reg.	king	reg.	king	
COCOBOLO	\$0.70	\$0.58	\$1.04	5/8" x 5/8" x 5"	\$50	\$63	\$97	\$301	\$454	\$567	\$858	
	\$0.99	\$0.83	\$1.44	3/4" x 3/4" x 5"	\$73	\$89	\$128	\$422	\$606	\$798	\$1144	
	\$2.03	\$1.75	\$3.32	1" x 1" x 6"	\$157	\$182	\$301	\$862	\$1423	\$1629	\$2688	
	* There are two grades of Cocobolo, Regular and King. King grade is hand picked and has incredible figure, swirls, solid knots with huge amounts of end grain on faces of the boards, burls, crotchwood, etc. Prices are per piece unless otherwise indicated	\$3.90	\$3.26	\$5.56	1" x 1" x 12"							
	\$11.12	\$8.90	\$21.11	1.5" x 1.5" x 12"								
	\$18.92	\$15.58	\$33.28	1.5" x 1.5" x 18"								
	\$24.30	\$22.88	\$46.38	1.5" x 1.5" x 24"								
	\$28.12	\$19.24	\$40.04	2" x 2" x 12"								
	\$35.04	\$30.26	\$60.84	2" x 2" x 18"								
	\$49.50	\$41.18	\$91.83	2" x 2" x 24"								
	\$58.34	\$47.32	\$108.16	3" x 3" x 12"								
	\$43.36		\$54.49	Ultra shorts; 1/2" -4/4; 1" -5"W; under 24" L (10 BF min.)								
	\$47.32		\$66.76	BF of 4/4; 2' -4' L x 3" -5 W								
	\$71.55		\$89.64	BF of 4/4; 5' -7' L x 3" -5" W								
	\$83.61		\$101.19	BF of 4/4; 2' -4' L x 6" -10" W								
	\$83.61		\$105.45	BF of 4/4; 5' -7' L x 6" - 10" W								
\$77.48		\$89.64	BF of 8/4; 2' -4' L x 3" - 5"									
\$81.12		\$101.92	BF of 8/4; 5' -7' L x 3"-5" W									
\$83.61		\$105.45	BF of 8/4; 2' -4' L x 6"-10" W									
\$95.68		\$120.12	BF of 8/4; 5' -7' L x 6"-10" W									



Cocobolo King Pen Blanks

Cocobolo Pen Blanks with some white wood

Price unit	Pack of 100	Size
\$0.59	\$54.6	5/8" x 5/8" x 5"
\$0.83	\$79.04	3/4" x 3/4" x 5"
\$1.75	\$168.48	1" x 1" x 6"



Pen blanks with some white wood

* Larger dimensions available. Other lengths available in 1.5" x 1.5", and 2" x 2"

* Quarter sawn and Bookmatched stock, logs and bowl blanks available. Please inquire.

SPECIES	PRICE regular	PRICE king	DESCRIPTION
COCOBOLO FLOORING	SQ. FT		Custom up to 6 inches wide x 3/4" Tongue & Groove
	\$71.24		2' to 6' lengths x 2" to 4" widths
	\$81.12		2' to 6' lengths x 4" to 6" widths
GUITAR SETS	\$229.32 - \$910		Cocobolo bookmat ched guitar veneer sets; 2 backs (25" x 8") and 2 sides (34" x 4")
	\$83.2 - \$108.16		Quartersawn Cocobolo lumber 1"- 3" thick (per bd ft)

We stock huge quantities of cocobolo in slabs, squares, and pen blanks. Please call or email if you need a specific size. Lots of these big slabs have been sanded. We also have squared cants = billets that are quartersawn for cutting guitar necks.

SPECIES	PRICE regular	PRICE king	DESCRIPTION
MANGO	\$0. each		5/8" x 5/8" x 5" pen blanks
	\$0.2 each		3/4" x 3/4" x 5" pen blanks
	\$43.36		100 pieces of 3/4" x 3/4" x 5" Hand-picked, highly figured mango
	\$1.01 each		1" x 1" x 6" Hand-picked, highly figured mango
	\$7.08		BF of BIG MANGO BALLS- crotches, burls, highly, figured
	\$9.88 - \$16.12		BF of 1" - 3" thick bookmat ched slabs, square cut lumber that has been planed (5/8 to 3" thick) and sanded 1" with wane

	LENGTH	WIDTH	THICKNESS	BD FT	PRICE
MANGO TURNING SQUARES	12	1.5	1.5	0.19	\$2.60
	18	1.5	1.5	0.28	\$4.14
	24	1.5	1.5	0.38	\$6.32
	12	2	2	0.33	\$4.78
	18	2	2	0.50	\$7.80
	24	2	2	0.67	\$1.12
	3	3	12	0.75	\$12.48
	* We also stock shorter mango turning squares that are 3" x 3"				

SPECIES	PRICE regular	PRICE king	DESCRIPTION
GIANT TURNING BLOCKS	\$4.47 to \$94.62		Per Board Foot of giant cocobolo, yellowheart , teak, monkeypod, etc. Turning blocks up to 300 pounds per piece.

We have a large selection of crosscuts = cross-sections of trees from 4 to 60 inches in diameter. We also have a lot of teak, mango, and monkeypod slabs that work great for dining tables, credenzas, vanities, mantles, etc.

We stock many dining table and coffee table/stool height wooden bases including strangler figs, india tree, teak and mango. Please send an email if you would like to see these lists with dimensions, prices, and links to see pictures.

SPECIES	PRICE PER BOARD FOOT	DESCRIPTION
GONCALO ALVES / TIGERWOOD EBONY	\$15.08	BF of 4/4 shorts, highly figured wood, end sealed, kiln dried
	\$16.12	BF of 4/4 lumber, kiln dried, 2' to 4' length s
		We Are On Back Order For 4/4 Goncalo.
		We Do Have Some Thicker Slabs In Stock If You Can Resaw
	\$19.44	BF of 4/4 lumber, X-long length s & width s
	\$21.63	BF of 6/4 and 8/4 lumber, planed, kiln dried, 6' - 9' L, 4" - 12"W
	\$0.41 each	5/8" x 5/8" x 5" pen blanks
	\$0.70 each	3/4" x 3/4" x 5" pen blanks
	\$1.12 each	1" x 1" x 6" pen blanks
Varies	\$15.6 to \$30.16 per BF of lumber depending on dimensions	

	LENGTH	WIDTH	THICKNESS	BD FT	PRICE
GONCALO ALVES TURNING SQUARES	12	1.5	1.5	0.19	\$6.13
	18	1.5	1.5	0.28	\$10.50
	24	1.5	1.5	0.38	\$15.18
	12	2	2	0.33	\$11.44
	18	2	2	0.50	\$20.59
	24	2	2	0.67	\$28.91

SPECIES	PRICE PER BOARD FOOT	DESCRIPTION
YELLOWHEART Turning Blocks	\$13.31	BF; 1.5" x 1.5" turning squares
	\$16.64	BF; 2" x 2" turning squares
	\$0.44 each	5/8" x 5/8" x 5" pen blanks
	\$0.66 each	3/4" x 3/4" x 5" pen blanks
	\$0.88 each	1" x 1" x 6" pen blanks
MONKEYPOD	\$8.32	BF of 6/4, 8/4, 10/4" thick, 3' to 14' long, up to 48" wide
	\$10.50	BF of 12/4, 14/4, 16/4 thick, up to 14' long and 48" wide
GRANADILLO MACCACUBA	\$16.64	BF of 2" x 2" turning squares
	\$13.31	BF of 1.5" x 1.5" turning squares
	\$9.46	BF of 4/4 stock, 3 - 5' L x 3" - 5' W
	\$10.60	BF of 4/4 stock, 5 - 7' L x 3" - 5' W
	\$14.04	BF of 8/4 stock
	\$27.87	5/8" x 5/8" x 5" pen blanks (100 pcs)
	\$43.36	3/4" x 3/4" x 5" pen blanks (100 pcs)
\$32.24	3/4" x 3/4" x 5" pen blanks with some white wood (100 pcs)	

MAHOGANY

\$12.48

BF of 4/4, 8/4, 12/4, 16/4 stock, various lengths and widths

* We also sell a number of different squares from 5/8, 3/4, 1, 1.5 and 2 inches in various lengths

SPANISH CEDAR

\$4.10 to \$8.26

BF of 4/4, 8/4, 12/4, 16/4 stock, various lengths and widths

* We also sell a number of different squares from 5/8, 3/4, 1, 1.5 and 2 inches in various lengths

	HEIGHT	NUMBER	SMALL END D.	BIG END D.	PRICE
STRANGLER FIG	29	SF3261	18	33	\$459
	16	SF3252	14	17	\$384
	21	SF3248	15	20	\$294



**Strangler Fig #SF3261
Height 29 Inches**



**Strangler Fig #SF3252
Height 16 Inches**



**Strangler Fig #SF3248
Height 21 Inches**

	HEIGHT	NUMBER	SMALL END D.	BIG END D.	PRICE
INDIA TREE BASES	25	IT0048	28	33.5	\$423
	22	IT0049	32	36	\$480
	24	IT0047	22.7	29	\$316



**India Tree Bases #48
Height 25 Inches**



**India Tree Bases #49
Height 22 Inches**



**India Tree Bases #47
Height 24 Inches**

	HEIGHT	NUMBER	SMALL END D.	BIG END D.	PRICE
MONKEYPOD BASES	21	MP5098	10	10	\$294
	22	MP5027	12	13	\$192
	22	MP5064	14	14	\$208



**Monkeypod Bases #MP5098
Height 21 Inches**



**Monkeypod Bases #MP5027
Height 22 Inches**



**Monkeypod Bases #MP5064
Height 22 Inches**

	HEIGHT	NUMBER	SMALL END D.	BIG END D.	PRICE
GONCALO ALVES BASES	14	7006	18	37	\$851
	20	7007	11	16	\$309
	23	7009	8	9	\$187



**Goncalo Alves #GA7006
Height 14 Inches**



**Goncalo Alves #GA7007
Height 120 Inches**



**Goncalo Alves #GA7009
Height 23 Inches**

	LENGTH	NUMBER	WIDTH A	WIDTH B	THICKNESS	PRICE
MANGO SLABS	96	3235	21	20	2	\$585
	76	3275	28	27	1 7/8	\$330
	78	3078	26	24	1 7/8	\$480



**Mango Slab #3235
Length 96 Inches**



**Mango Slab #3275
Length 76 Inches**

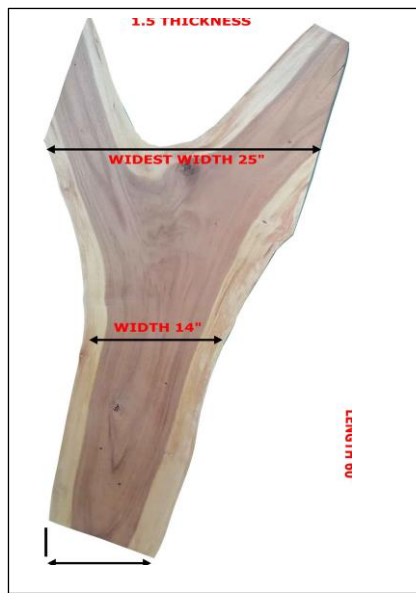


**Mango Slab #3078
Length 78 Inches**

	LENGTH	NUMBER	WIDTH A	WIDTH B	THICKNESS	PRICE
MONKEYPOD SLABS	49	3265	31	29	2 1/8	\$318
	65	3003	24	24	1.5	\$200
	97	3307	20	19	2	\$300



**Monkeypod Slab #3266
Length 49 Inches**



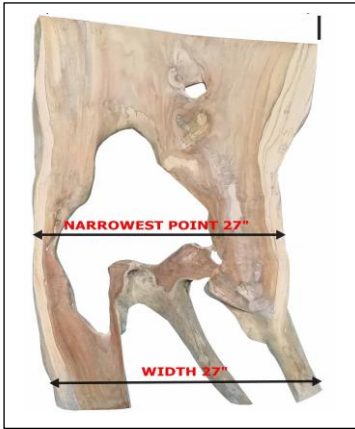
**Monkeypod Slab #3003
Length 65 Inches**



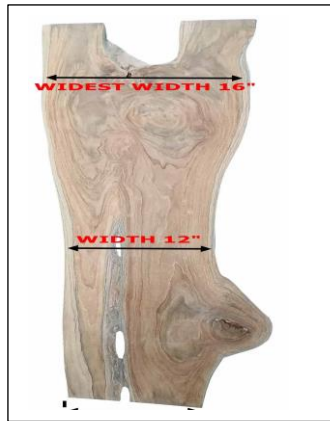
**Monkeypod Slab #3307
Length 97 Inches**

**TEAK
SLABS**

LENGTH	NUMBER	WIDTH A	WIDTH B	THICKNESS	PRICE
51	3285	25	30	2 1/8	\$435
66	2821	11	12	2 1/4	\$294
71	2299	16	12	2 1/8	\$343



**Teak Slab #3285
Length 51 Inches**

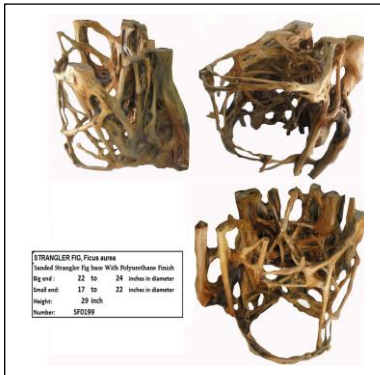


**Teak Slab #2821
Length 66 Inches**

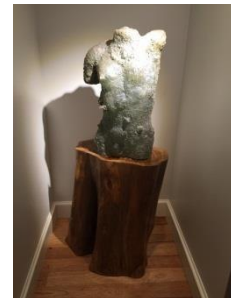


**Mango Slab #3311
Length 71 Inches**

*Pricing and available subject to change without notice
 *Pricing based on 20 BF minimum order
 *Discount offered for orders over 100 BF



Many other exotic tropical hardwoods available.
 Please contact us with you inquiries.
 Longer, wider, and thicker wood available
 We custom saw, kiln dry, and finish (plane, sand, T&G, etc.)



**Strangler fig bases come in dining
and coffee table heights**



**Teak bases work great for stools,
coffee tables or dining table bases**

**India tree bases come in dining
and coffee table heights**

Spirit Song collection.

Introducing our **Spirit Song collection**. Golden teak and shimmering stainless steel blend together in a timeless elegance of strength and stability. This exquisite line of heirloom furniture can be combined in countless arrangements for both indoor and outdoor use. Each design in the collection is a work of art, with graceful, elegant curves crafted by the team of Tiffany and Tiffany.

Read more at: <https://diamondteak.com/>



DESIGN EXCELLENCE AWARD WINNER



SOLID TEAK WOOD FURNITURE
STAINLESS STEEL HARDWARE



WWW.DIAMONDTEAK.COM
215.453.2196



DIAMOND TROPICAL HARDWOODS

**Exotic Hardwoods from Latin America Highly Figured
Hand-Picked
Environmentally Certified**

**220 North Main Street. Sellersville, PA 18960
WWW.DIAMONDTROPICALHARDWOODS.COM
TELF: 215.257.2556
TELF: 215.453.2196
FAX: 206.289.1008**

Many of our clients tell us that our wood is so beautiful it will shoot the socks of the ends of your feet even if you are wearing shoes!

All we can guarantee is that we will plant trees with your money.

We use sustainable wood that is beautiful with nice figure and character. Wood products protect the environment since we have FSC certified reforestation projects with chain-of-custody (CoC) so you are guaranteed of the sustainability of this natural substance. Solid wood adds beauty and character while sequestering carbon to make the world a cooler place.

**We have been reforesting native species of trees in democratic Costa Rica for 26 years. Very few people know that some trees such as cocobolo rosewood, mahogany, and Spanish cedar are in danger of extinction. Trees are not as photogenic as tigers and sea turtles. But trees are essential to a healthy environment that includes clean air and water. Please consider our woods so that we can continue protecting the environment and empowering people in the less developed countryside in the tropics.
Thanks, Diamond Tropical Hardwoods**