



DIAMOND TROPICAL HARDWOODS

Exotic Hardwoods from Latin America

***Hand-picked
Wood***

Highly Figured

2022



Environmental Conscience



The story of Diamond Tropical Hardwoods grew out of a desire to help and to serve others. Kevin and Christine Yardley met while both were studying at Harvard University. Upon graduating, the newlyweds volunteered to teach English for the WorldTeach Organization in rural Costa Rica. Because there was no guarantee of them being stationed in the same area, Christine became a teacher in the program while Kevin began dedicating his prodigious energy to protecting the environment in an entrepreneurial way. Costa Rica had some of the fastest deforestation rates in the world, so there was a desperate need to offset this environmental destruction. Costa Rica's bio-diversity includes 5 percent of all known species in an area the size of West Virginia. The reforestation effort in Costa Rica has done a great deal of good.

In 1992, Diamond Tropical Hardwoods bought their first degraded cattle farm and began planting teak. In addition to farming teak, they have planted seventy other species including endangered native trees such as cocobolo rosewood, Spanish cedar and mahogany.

Today, their plantations protect more than 1000 acres of primary and secondary jungle. The company has seen the impact of logging in the rainforest and the widespread harm that it produces. This is why Diamond Tropical Hardwoods adheres to internationally recognized Forest Stewardship Council environmental principles and has chain-of-custody (CoC).

Our business is a member of the Forest Stewardship Council (FSC).

PROTECT OUR ENVIRONMENT!
USE ONLY RESPONSIBLY REFORESTED, SUSTAINABLE HARDWOODS!





Teak (*Tectona Grandis*) is one of the finest woods in the world. The best outdoor furniture and boats are made with teak. Teak has natural oil and silica that make the wood very durable. We stock a lot of S4S and sanded teak including tongue and groove for siding, ceilings, and working on boats. Lots of slabs, crosscuts, and bases for stools, coffee and dining tables.



Cocobolo Rosewood (*Dalbergia Retusa*) is the most popular true rosewood. The wood has brilliant colors with oranges, reds, and blacks all swirled together. We stock a lot of squares for pool cues, pen making and turnings as well as lumber and veneer. We have a proprietary, hand-picked, super figured line of cocobolo we call KING.



Goncalo Alves/Tigerwood Ebony (*Astrononium Graveolens*) is a hard, dense wood with striking black lines that can look like ebony. Goncalo with some white wood/sapwood highlights the brilliant oranges, reds, and yellows with black stripe.



Monkeypod (*Pithecolobium Samans*) is similar to figured black walnut. We stock a lot of giant slabs and crosscuts used for dining and coffee tables and bars.



Spanish Cedar (*Cedrella Odorata*) is a durable wood with great properties. Popular for humidors and instrument making, we stock a lot of quartersawn guitar necks and bodies and 1/4" thick sanded veneer.



Mahogany (*Swietenia Macrophylla*) is straight grained and stable and sought after by musical instrument makers around the world. We stock a lot of quartersawn guitar necks and bodies.



Granadillo (*Platymiscium*) is very similar to rosewood with a range of colors from dark red to pink and can have lots of character with dark stripes. Popular in fine furniture, flooring, and musical instrument making, granadillo is used in fine turnings and cabinetry.



Mango (*Mangifera Indica*) is the highest figured wood we have come across in 30 years in the exotic wood industry. Very similar to koa, mango has curly grain, spalting, yellows, pinks, oranges, tans and green colors with lots of fiddleback, burls, whirls, and swirls.



Yellowheart (*Maclura Tinctoria*) is a hard, dense wood with brilliant color that is long lasting. Used in cutting boards, turnings, pool cues, and marquetry, yellowheart has nice ribbon figure and better tap tone than mahogany.

We have a fine woodworking business so we can edge, plane, sand, roundover, and change the shape of wood. This can save time and money on shipping as rough wood is heavier and more bulky than finished wood.

S4S = surfaced four sides

E2E = eased two edges

Quartersawn = vertical grain that makes the wood more stable and is required for the best teak decking, guitar necks, and other uses.

We own FSC certified reforestation projects, sawmills, and kilns as well as a fine furniture factory. We make many lines of furniture and wooden products for the best companies such as Martin Guitar, Knoll, Henry Hall Designs, etc.

Please call or email howdy@diamondteak.com to check out how we can lower your costs by edging, planing, sanding, shaping, etc.

Finished wood costs less to ship! We appreciate your business.

SPECIES	HEARTWOOD 100%	STANDARD TEAK	DESCRIPTION
TEAK LUMBER	\$0.21 each		5/8" x 5/8" x 5" pen blanks
	\$0.28 each		3/4" x 3/4" x 5" pen blanks
	\$0.50 each		1" x 1" x 6" pen blanks (7" and 8" available) also comes in end grain at \$0.98 each
	\$38.50		100 Pieces of 3/4" x 3/4" x 5" Highly figured pen blanks
(PRICE PER BOARD FOOT UNLESS INDICATED OTHERWISE)	\$7.65	\$5.45	Shorts, 4/4, 2" to 4" wide; under 24" long
	\$9.85	\$6.55	Shorts, 4/4, 4" or wider; under 24" long
	\$13.10	\$7.65	4/4; 2'-3' L x 3" -6" W
	\$16.40	\$8.75	4/4; 3'-5' L -4" and wider
	\$19.70	\$9.85	4/4; 5'-8' L x 3" -6" W
	\$15.30	\$8.75	4/4; 2' -3' L x 4" -10" W
	\$23	\$13.10	4/4; 3' -5' L 4" -10' W
	\$27.40	\$15.30	4/4; 5' -8' L x 4" -10" W
	\$29.60	\$17.50	6/4-8/4; 4' -8' L x 4" and wider
	\$5.50 to \$10.50		4/4-8/4; highly figured shorts
	\$32.90	\$18.60	8/4; 8' -13' L x 3" -6" W usually special order
	\$10.90- \$14.40		Bookmatched boards from same log and large slabs
	\$7-.7 \$22	per board foot	Beams and posts; 4" x 4", 4" x 8", etc.
	\$18.7 - \$27.5	per square foot	Quartersawn teak decking (depends on dimensions)
* Standard teak has a mix of heartwood and sapwood			
* We stock planed teak that has one face clear = one wide face with all heartwood			
TEAK VENEER	\$4.29		Price per sq foot; sanded veneer (finished at 1/16th")
	\$5.39 to \$7.59		Price per sq foot; sanded veneer (finished at 1/8th")
			3/32" and 1/4" thick sanded veneer also available

	Heartwood 100%	One face clear	Standard Teak	Tongue & Groove (universal) One package covers 40 Sq Ft
TEAK SIDING/FLOORING (7/16" thick)	\$383.00	\$287.00	\$230.00	96" long x 3" wide x 1/2" thick (pack of 21 boards)
	\$341.00	\$271.00	\$207.00	90" long x 3" wide x 1/2" thick (pack of 23 boards)
	\$298.00	\$253.00	\$179.00	84" long x 3" wide x 1/2" thick (pack of 24 boards)
	\$287.00	\$218.00	\$167.00	72" long x 3" wide x 1/2" thick (pack of 28 boards)
	\$275.00	\$184.00	\$156.00	60" long x 3" wide x 1/2" thick (pack of 34 boards)
2.75" FACE WHEN INSTALLED	\$215.00	\$172.00	\$144.00	48" long x 3" wide x 1/2" thick (pack of 42 boards)
	\$190.00	\$149.00	\$133.00	36" long x 3" wide x 1/2" thick (pack of 57 boards)
	\$1430.00		\$109.00	30" long x 3" wide x 1/2" thick (pack of 69 boards)
	\$119.00		\$91.00	24" long x 3" wide x 1/2" thick (pack of 88 boards)
	\$114.00		\$86.00	22" long x 3" wide x 1/2" thick (pack of 96 boards)
PRICE PER PACK	\$107.00		\$79.00	18" long x 3" wide x 1/2" thick (pack of 118 boards)
	\$95.00		\$73.00	14" long x 3" wide x 1/2" thick (pack of 148 boards)

SPECIES	HEARTWOOD 100%	STANDARD TEAK	DESCRIPTION
---------	-------------------	---------------	-------------

**TEAK SIDING /
FLOORING (3/4")**

WE CAN MAKE TEAK TONGUE AND GROOVE UP TO 6 INCHES WIDE.
PLEASE SEND THE SPECIFICATIONS = WIDTH, LENGTHS, AND THICKNESS.

Marine Grade=All heartwood teak is available for all teak lumber, siding and flooring. Please inquire.

	LENGTH	WIDTH	THICKNESS	BD FT	PRICE
TEAK ALL HEARTWOOD, EDGED, PLANED AND SANDED	48	1.75	0.875	0.51	\$19
	48	2.25	0.4375	0.33	\$13
	48	2	0.5	0.33	\$13
	48	3	0.5	0.50	\$21
	48	4	0.75	1.00	\$44
	48	2.75	0.75	0.69	\$22
	48	2.5	0.75	0.63	\$20
	48	6	0.125	0.25	\$20
	60	2.5	0.5	0.52	\$20
	60	3	0.375	0.47	\$33
	60	1.875	0.375	0.29	\$16
	60	5.75	0.375	0.90	\$60
	60	1.1875	1.1875	0.59	\$20
	72	1.75	0.5	0.44	\$18
	72	1.875	0.5	0.47	\$16
	72	2.5	0.5	0.63	\$20
	72	3	0.5	0.75	\$26
	72	3.5	0.5	0.88	\$28
	84	3.5	0.5	1.02	\$28
	96	1.75	0.5	0.58	\$36
	96	3	0.5	1.00	\$41
	96	3.5	0.5	1.17	\$44

TEAK BASES	HEIGHT	NUMBER	SMALL END D.	BIG END D.	PRICE
	26	T0169	15	26	\$345
	18	865	7	9	\$139
	11	T2347	8	10	\$89



Teak Base #T0169
Height 26 Inches



Teak Base #865
Height 18 Inches



Poly Finished Teak Base T2347
Height 11 Inches

SPECIES	Regular	Some white	King	DESCRIPTION	Pack of 100			Pack of 500		Pack of 1000	
					Some white	reg.	king	reg.	king	reg.	king
COCOBOLO	\$0.64	\$0.53	\$0.99	5/8" x 5/8" x 5"	\$49	\$61	\$93	\$289	\$437	\$545	\$ 825
	\$0.90	\$0.75	\$1.30	3/4" x 3/4" x 5"	\$70	\$86	\$123	\$406	\$583	\$767	\$1100
	\$1.84	\$1.58	\$3.00	1" x 1" x 6 "	\$151	\$175	\$289	\$829	\$1369	\$1566	\$2585
	* There are two	\$3.50	\$2.93	\$5.00	1" x 1" x 12 "						
	grades of Cocobolo,	\$10.00	\$8.00	\$19.00	1.5" x 1.5" x 12"						
	Regular and King.	\$17.00	\$14.00	\$30.00	1.5" x 1.5" x 18"						
	King grade is hand	\$24.30	\$20.60	\$41.70	1.5" x 1.5" x 24"						
	picked and has	\$20.00	\$17.30	\$36.00	2" x 2" x 12"						
	incredible figure,	\$31.50	\$27.25	\$54.70	2" x 2" x 18"						
	swirls, solid knots	\$31.50	\$27.25	\$54.70	2" x 2" x 24"						
* There are two grades of Cocobolo, Regular and King. King grade is hand picked and has incredible figure, swirls, solid knots with huge amounts of end grain on faces of the boards, burls, crotchwood, etc. Prices are per piece unless otherwise indicated	\$44.50	\$37.00	\$82.50	2" x 2" x 24"							
	\$52.50	\$42.50	\$97.00	3" x 3" x 12"							
	\$39.00		\$49.00	Ultra shorts; 1/2" -4/4; 1" -5"W; under 24" L (10 BF min.)							
	\$42.50		\$60.00	BF of 4/4; 2' -4' L x 3" -5 W							
	\$64.30		\$80.60	BF of 4/4; 5' -7' L x 3" -5" W							
	\$67.50		\$85.00	BF of 4/4; 2' -4' L x 6" -10" W							
	\$75.20		\$94.80	BF of 4/4; 5' -7' L x 6" - 10" W							
	\$69.70		\$87.00	BF of 8/4; 2' -4' L x 3"- 5"							
	\$73.00		\$91.50	BF of 8/4; 5' -7' L x 3"-5" W							
	\$75.20		\$94.80	BF of 8/4; 2' -4' L x 6"-10" W							
	\$86.00		\$107.99	BF of 8/4; 5' -7' L x 6"-10" W							



Cocobolo King Pen Blanks

Cocobolo Pen Blanks with some white wood

Price unit	Pack of 100	Size
\$0.53	\$49	5/8" x 5/8" x 5"
\$0.75	\$71	3/4" x 3/4" x 5"
\$1.58	\$151.50	1" x 1" x 6"



Pen blanks with some white wood

* Larger dimensions available. Other lengths available in 1.5" x 1.5", and 2" x 2"

* Quarter sawn and Bookmatched stock, logs and bowl blanks available. Please inquire.

SPECIES	PRICE regular	PRICE king	DESCRIPTION
COCOBOLO FLOORING	SQ. FT		Custom up to 6 inches wide x 3/4" Tongue & Groove
	\$64.00		2' to 6' lengths x 2" to 4" widths
	\$73.00		2' to 6' lengths x 4" to 6" widths
GUITAR SETS	\$206 - \$817.50		Cocobolo bookmat ched guitar veneer sets; 2 backs (25" x 8") and 2 sides (34" x 4")
	\$75 - \$97		Quartersawn Cocobolo lumber 1"- 3" thick (per bd ft)

We stock huge quantities of cocobolo in slabs, squares, and pen blanks. Please call or email if you need a specific size. Lots of these big slabs have been sanded. We also have squared cants = billets that are quartersawn for cutting guitar necks.

SPECIES	PRICE regular	PRICE king	DESCRIPTION
MANGO	\$0.19 each		5/8" x 5/8" x 5" pen blanks
	\$0.25 each		3/4" x 3/4" x 5" pen blanks
	\$39		100 pieces of 3/4" x 3/4" x 5" Hand-picked, highly figured mango
	\$0.98 each		1" x 1" x 6" Hand-picked, highly figured mango
	\$7.00		BF of BIG MANGO BALLS- crotches, burls, highly, figured
	\$9.50 - \$14.50		BF of 1" - 3" thick bookmatched slabs, square cut lumber that has been planed (5/8 to 3" thick) and sanded 1" with wane

	LENGTH	WIDTH	THICKNESS	BD FT	PRICE
MANGO TURNING SQUARES	12	1.5	1.5	0.19	\$2.30
	18	1.5	1.5	0.28	\$3.70
	24	1.5	1.5	0.38	\$5.40
	12	2	2	0.33	\$4.30
	18	2	2	0.50	\$7.00
	24	2	2	0.67	\$10.00
	3	3	12	0.75	\$11.30
	* We also sell a shorter squares from 3 x 3 inch				

SPECIES	PRICE regular	PRICE king	DESCRIPTION
GIANT TURNING BLOCKS	\$4 to \$85		Per Board Foot of giant cocobolo, yellowheart, teak, monkeypod, etc. Turning blocks up to 300 pounds per piece.

We have a large selection of crosscuts = cross-sections of trees from 4 to 60 inches in diameter. We also have a lot of teak, mango, and monkeypod slabs that work great for dining tables, credenzas, vanities, mantles, etc.

We stock many dining table and coffee table/stool height wooden bases including strangler figs, india tree, teak and mango. Please send an email if you would like to see these lists with dimensions, prices, and links to see pictures.

WWW.DIAMONDTROPICALHARDWOODS.COM TEL: 215.257.2556 TEL: 215.453.2196 FAX: 844.468.8915

SPECIES	PRICE PER BOARD FOOT	DESCRIPTION
GONCALO ALVES / TIGERWOOD EBONY	\$13.50	BF of 4/4 shorts, highly figured wood, end sealed, kiln dried
	\$14.50	BF of 4/4 lumber, kiln dried, 2' to 4' lengths
		We Are On Back Order For 4/4 Goncalo.
		We Do Have Some Thicker Slabs In Stock If You Can Resaw
	\$17.50	BF of 4/4 lumber, X-long lengths & widths
	\$19.50	BF of 6/4 and 8/4 lumber, planed, kiln dried, 6' - 9' L, 4" - 12"W
	\$0.39 each	5/8" x 5/8" x 5" pen blanks
	\$0.59 each	3/4" x 3/4" x 5" pen blanks
	\$0.89 each	1" x 1" x 6" pen blanks
	Varies	\$15 to \$29 per BF of lumber depending on dimensions

	LENGTH	WIDTH	THICKNESS	BD FT	PRICE
GONCALO ALVES TURNING SQUARES	12	1.5	1.5	0.19	\$5.50
	18	1.5	1.5	0.28	\$9.50
	24	1.5	1.5	0.38	\$13.70
	12	2	2	0.33	\$10.30
	18	2	2	0.50	\$18.50
	24	2	2	0.67	\$26.00

SPECIES	PRICE PER BOARD FOOT	DESCRIPTION
YELLOWHEART Turning Blocks	\$12.00	BF; 1.5" x 1.5" turning squares
	\$15.00	BF; 2" x 2" turning squares
	\$0.40 each	5/8" x 5/8" x 5" pen blanks
	\$0.60 each	3/4" x 3/4" x 5" pen blanks
	\$0.79 each	1" x 1" x 6" pen blanks
MONKEYPOD	\$7.50	BF of 6/4, 8/4, 10/4" thick, 3' to 14' long, up to 48" wide
	\$9.50	BF of 12/4, 14/4, 16/4 thick, up to 14' long and 48" wide
GRANADILLO MACCACUBA	\$15.00	BF of 2" x 2" turning squares
	\$12.00	BF of 1.5" x 1.5" turning squares
	\$8.50	BF of 4/4 stock, 3 - 5' L x 3" - 5' W
	\$9.50	BF of 4/4 stock, 5 - 7' L x 3" - 5' W
	\$12.50	BF of 8/4 stock
	\$25.00	5/8" x 5/8" x 5" pen blanks (100 pcs)
	\$39.00	3/4" x 3/4" x 5" pen blanks (100 pcs)
	\$29.00	3/4" x 3/4" x 5" pen blanks with some white wood (100 pcs)

MAHOGANY \$12.00 BF of 4/4, 8/4, 12/4, 16/4 stock, various lengths and widths
 * We also sell a number of different squares from 5/8, 3/4, 1, 1.5 and 2 inches in various lengths

SPANISH CEDAR \$3.95 to \$7.95 BF of 4/4, 8/4, 12/4, 16/4 stock, various lengths and widths
 * We also sell a number of different squares from 5/8, 3/4, 1, 1.5 and 2 inches in various lengths

	HEIGHT	NUMBER	SMALL END D.	BIG END D.	PRICE
STRANGLER FIG	25	SF0115	18	32	\$235
	29	SF3157	19	31	\$289
	23	SF3154	13	22	\$189



Strangler Fig #SF0115
Height 25 Inches



Strangler Fig #SF3157
Height 29 Inches



Strangler Fig #SF3154
Height 23 Inches

	HEIGHT	NUMBER	SMALL END D.	BIG END D.	PRICE
INDIA TREE BASES	26	IT0022	9	22	\$185
	22	IT0049	32	36	\$449
	24	IT0047	22.7	29	\$295



India Tree Bases #22
Height 26 Inches



India Tree Bases #49
Height 22 Inches



India Tree Bases #47
Height 24 Inches

	HEIGHT	NUMBER	SMALL END D.	BIG END D.	PRICE
MONKEYPOD BASES	22	PM0013	10	14	\$225
	22	5027	12	13	\$179
	16	PM0017	16	21	\$225



**Monkeypod Bases #PM0013
Height 22 Inches**



**Monkeypod Bases #MP5027
Height 22 Inches**



**Monkeypod Bases #PM0017
Height 16 Inches**

	HEIGHT	NUMBER	SMALL END D.	BIG END D.	PRICE
GONCALO ALVES BASES	16	13	7.5	8.5	\$144
	18	7001	8	9	\$149
	23	7009	8	9	\$175



**Goncalo Alves #PG0013
Height 16 Inches**



**Goncalo Alves #GA7001
Height 18 Inches**



**Goncalo Alves #GA7009
Height 23 Inches**

	LENGTH	NUMBER	WIDTH A	WIDTH B	THICKNESS	PRICE
MANGO SLABS	67	2814	20	19	2.375	\$298
	67	2855	21	20	2.375	\$306
	131	1332	18	33	3	\$661



**Mango Slab #2814
Length 67 Inches**



**Mango Slab #2855
Length 67 Inches**



**Mango Slab #1332
Length 131 Inches**

	LENGTH	NUMBER	WIDTH A	WIDTH B	THICKNESS	PRICE
MONKEYPOD SLABS	81	3038	24	21	2.375	\$449
	86	3025	15	12	1.75	\$242
	73	3006	23	17	2.125	\$371



**Monkeypod Slab #3038
Length 81 Inches**



**Monkeypod Slab #3025
Length 86 Inches**



**Monkeypod Slab #3006
Length 73 Inches**

TEAK SLABS

LENGTH	NUMBER	WIDTH A	WIDTH B	THICKNESS	PRICE
55	2298	16	15	1.875	\$279
60	1664	14	12	4	\$693
63	2822	18	11	2.125	\$327



**Teak Slab #2298
Length 55 Inches**



**Teak Slab #1664 Oil Watco
Length 60 Inches**



**Mango Slab #2822
Length 63 Inches**

*Pricing and available subject to change without notice

*Pricing based on 20 BF minimum order

*Discount offered for orders over 100 BF

Many other exotic tropical hardwoods available.

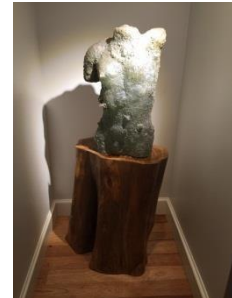
Please contact us with you inquiries.

Longer, wider, and thicker wood available

We custom saw, kiln dry, and finish (plane, sand, T&G, etc.)



**Strangler fig bases come in dining
and coffee table heights**



**Teak bases work great for stools,
coffee tables or dining table bases**



**India tree bases come in dining
and coffee table heights**

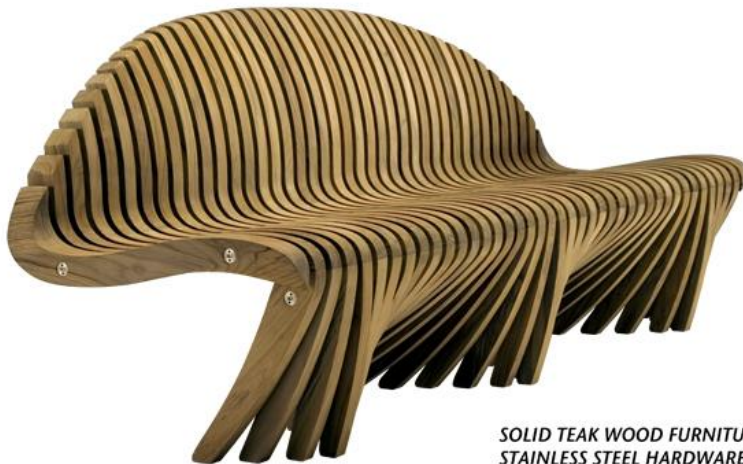
Spirit Song collection.

Introducing our **Spirit Song collection**. Golden teak and shimmering stainless steel blend together in a timeless elegance of strength and stability. This exquisite line of heirloom furniture can be combined in countless arrangements for both indoor and outdoor use. Each design in the collection is a work of art, with graceful, elegant curves crafted by the team of Tiffany and Tiffany.

Read more at: <https://diamondteak.com/>



DESIGN EXCELLENCE AWARD WINNER



SOLID TEAK WOOD FURNITURE
STAINLESS STEEL HARDWARE



WWW.DIAMONDTEAK.COM
215.453.2196

WWW.DIAMONDTROPICALHARDWOODS.COM

TEL: 215.257.2556

TEL: 215.453.2196

FAX: 844.468.8915

Page 14



DIAMOND TROPICAL HARDWOODS

Exotic Hardwoods from Latin America Highly Figured
Hand-Picked
Environmentally Certified

220 North Main Street. Sellersville, PA 18960
WWW.DIAMONDTROPICALHARDWOODS.COM
TELF: 215.257.2556
TELF: 215.453.2196
FAX: 206.289.1008

Many of our clients tell us that our wood is so beautiful it will shoot the socks of the ends of your feet even if you are wearing shoes!

All we can guarantee is that we will plant trees with your money.

We use sustainable wood that is beautiful with nice figure and character. Wood products protect the environment since we have FSC certified reforestation projects with chain-of-custody (CoC) so you are guaranteed of the sustainability of this natural substance. Solid wood adds beauty and character while sequestering carbon to make the world a cooler place.

We have been reforesting native species of trees in democratic Costa Rica for 26 years. Very few people know that some trees such as cocobolo rosewood, mahogany, and Spanish cedar are in danger of extinction. Trees are not as photogenic as tigers and sea turtles. But trees are essential to a healthy environment that includes clean air and water.

Please consider our woods so that we can continue protecting the environment and empowering people in the less developed countryside in the tropics.

Thanks, Diamond Tropical Hardwoods